

GE Healthcare

LOGIQ™ S8

Signature Series



simply
amazing





Simply

LOGIQ™ S8

Superb imaging

Simplified workflow

Scalable to your needs

Provide excellent care for your patients with the LOGIQ™ S8.

We are committed to providing you with superb imaging and simplified workflow in an ultrasound system scalable to your needs. This enables you to make clinical decisions with greater confidence and better support your daily clinical needs.

Superb imaging to improve your clinical confidence

The migration of the Agile Acoustic Technology into the LOGIQ™ S8 S-Agile Architecture combined with the power of E-Series transducers leads to superb image quality in a wide range of clinical applications including abdominal, musculoskeletal, small parts, breast, vascular, cardiology and more.

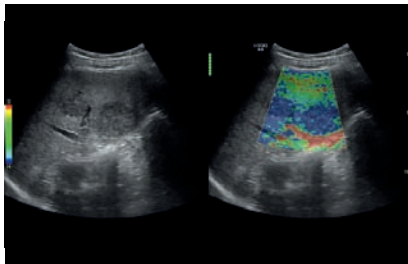


amazing.

Features taking your imaging to the next level of excellence

Elastography

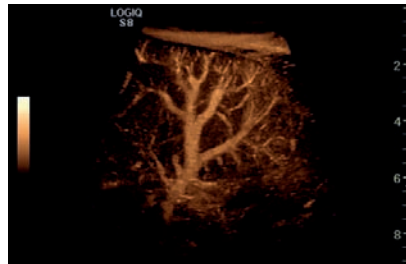
Covering a wide range of applications, the Elastography package increases your diagnostic confidence thanks to a comprehensive set of features including E-Index and Q-Analysis tools based on GE Raw Data processing.



Dual mode imaging displaying both acoustic and elastic properties of liver lesions

B-Flow

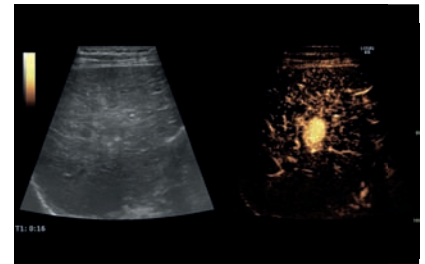
The B-Flow Mode, based on GE coded technology, displays true flow hemodynamics without the limitations of Doppler, improving your clinical confidence in vascular assessment.



B-Flow of the splenic vasculature

Contrast Enhanced Ultrasound (CEUS) including Raw Data TIC quantification

A full suite of settings to achieve superb contrast agent resolution, sensitivity and penetration in a variety of clinical applications.



Dual imaging of a liver lesion in the arterial phase

Simplified workflow to increase your produc

The LOGIQ™ S8 provides easy-to-use tools that help busy departments and practices improve workflow. While securing exam consistency, a streamlined and innovative design ensures exceptional user comfort.

With a fully adjustable console and flat-screen, a very compact design and incredible scanning comfort, the LOGIQ™ S8 follows the Society of Diagnostic Medical Sonographers (SDMS) guidelines.

With the LOGIQ™ S8, moving your ultrasound system around is easier than ever before.

Four active pinless ports and one parking slot improve your flexibility in moving through a wide range of clinical applications.

Probe holders on both sides of the operating panel and light-weight cables keep the needed transducers available at your fingertips.

You can easily customize the system settings and commands using the large configurable touchscreen.





Scalable to your needs

At your service to provide tailored solutions that meet your unique clinical requirements

With the LOGIQ™ S8 vision, we are committed to help you face your challenges investing in programs and solutions that truly meet your daily needs.

Packages of technical features support further enhancement of your clinical confidence. Service and financing offerings secure your investment with value-for-money solutions. A wide range of educational opportunities, including academic classroom trainings, online tutorials, LOGIQ Users Days, Meet the Experts workshops and more customized solutions tailored to your needs are at your disposal.

LOGIQClub, the LOGIQ Users community, offers you privileged advantages such as: free access to education, collaterals, application support and tips & tricks.

LOGIQ™ S8 – Close to you to provide excellent care for your patients

tivity and scanning comfort

Tools that help you work smarter

Auto IMT and Auto calculations enable streamlined vascular risk assessment studies.

Elastography and 2D PDI/CFM quantification elevate your diagnostic and therapeutic assessment to a new level.

With Auto Optimization you achieve the best LOGIQ™ S8 imaging settings in one keystroke.

GE Raw Data, enables a wide variety of processing after the exam closes, saves you time and improves workflow.

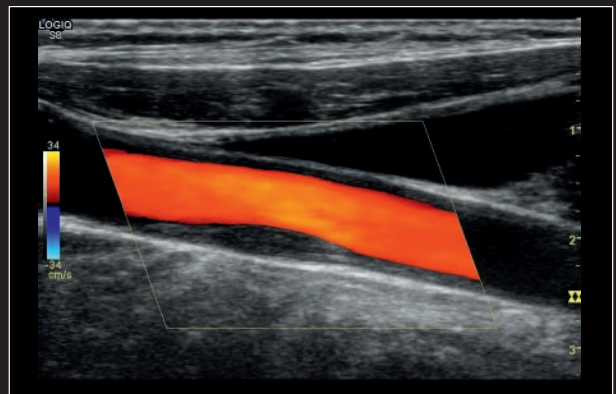
Scan Assistant, the GE flexible and scalable scanning programs, helps you improve exam consistency. It provides standardization and increases efficiency, reducing keystrokes and exam time.



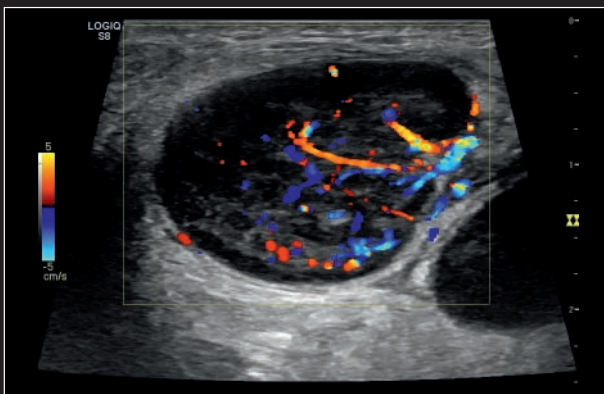
amazing.



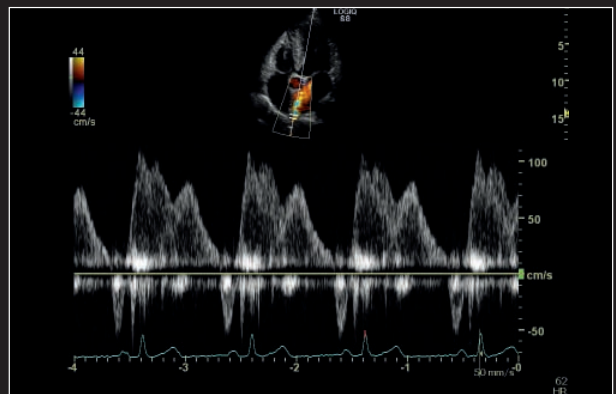
Spectacular resolution of gallbladder polyps



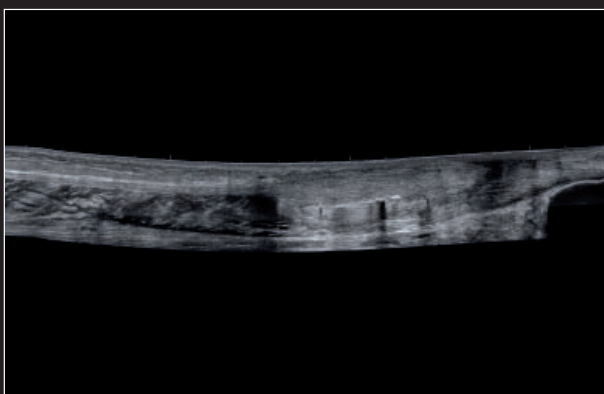
Arterial color flow framing a common carotid artery plaque while maintaining superb B-mode image quality



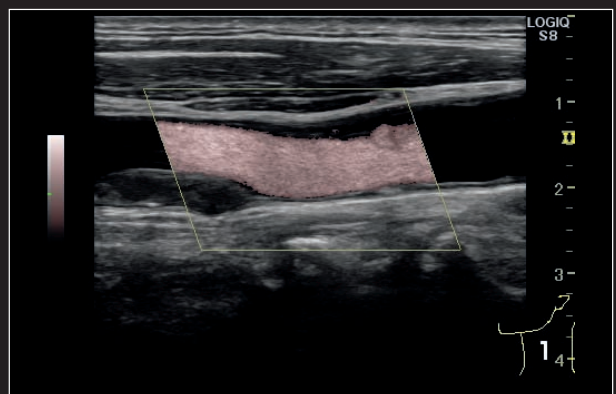
Outstanding color flow sensitivity in the small vessels of this abnormal lymph node



Apical four chamber view with Doppler demonstrating shared service capabilities



LOGIQView of Achilles tendon repair



B-Flow Color showing flow hemodynamics within a diseased carotid artery

© 2011 General Electric Company – All rights reserved.

General Electric Company reserves the right to make changes in specifications and features shown herein, or discontinue the product described at any time without notice or obligation. Contact your GE Representative for the most current information.

GE, the GE logo and LOGIQ are trademarks of General Electric Company.

GE Medical Systems Ultrasound & Primary Care Diagnostics, LLC, a General Electric company, doing business as GE Healthcare.

DOC0999054

EMEA

GE Ultraschall Deutschland GmbH
Beethovenstr. 239, D-42655 Solingen
T 49 212-28 02-0
F 49 212-28 02-28

AMERICAS

T +1 888 202 5582

APAC

T +81 42 585 5111

LATIN AMERICA

T 0800 122 345

CHINA

T +86 21 3877 4045

INDIA

T +91 80 418 01224

About GE Healthcare

GE Healthcare provides transformational medical technologies and services that are shaping a new age of patient care. Our broad expertise in medical imaging and information technologies, medical diagnostics, patient monitoring systems, drug discovery, biopharmaceutical manufacturing technologies, performance improvement and performance solutions services help our customers to deliver better care to more people around the world at a lower cost. In addition, we partner with healthcare leaders, striving to leverage the global policy change necessary to implement a successful shift to sustainable healthcare systems.

Our “healthymagination” vision for the future invites the world to join us on our journey as we continuously develop innovations focused on reducing costs, increasing access and improving quality around the world. Headquartered in the United Kingdom, GE Healthcare is a unit of General Electric Company (NYSE: GE). Worldwide, GE Healthcare employees are committed to serving healthcare professionals and their patients in more than 100 countries. For more information about GE Healthcare, visit our website at www.gehealthcare.com.



GE imagination at work