

GE Healthcare

LOGIQ P6

Performance within reach.



Achieve certainty across more applications.

You need high-quality images every time you scan, no matter where you are. Now you can achieve clinical confidence with a system that's small enough to go almost anywhere yet strong enough to give you the exceptional imaging you need.

Introducing LOGIQ® P6. Its combination of performance and versatility enables you to meet the needs of patients across multiple clinical

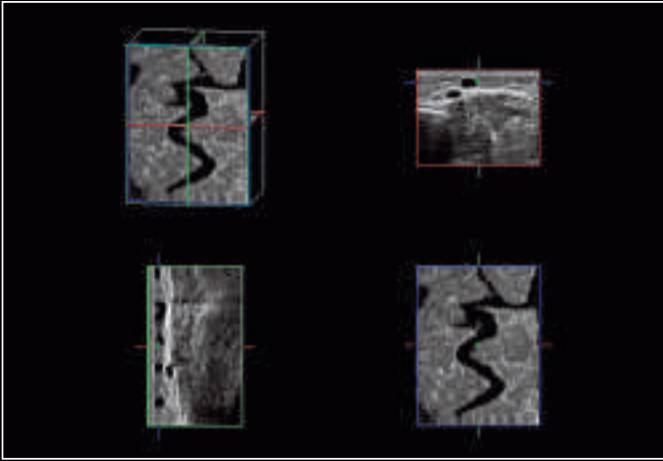


settings. With advanced detail resolution and color flow, you can easily distinguish between cystic and solid lesions, especially in small areas like the thyroid, breast and ovary. And the increased detail and contrast resolution help identify even the most challenging pathologies. These capabilities help to optimize your ability for earlier diagnosis.

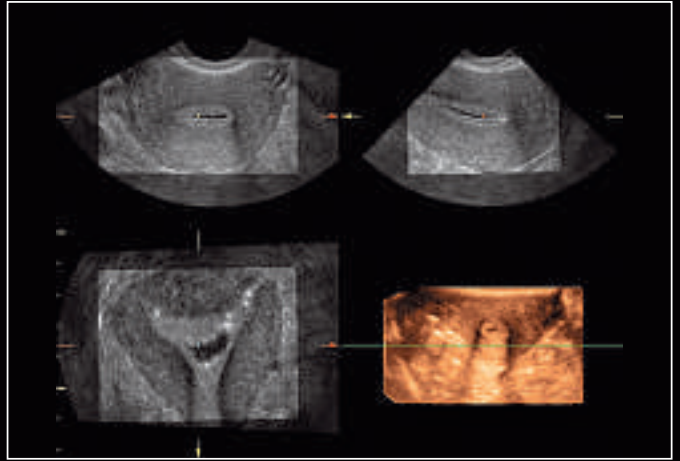
Whether it's visualizing vessels that have multiple velocities or minute vessels in the kidney, LOGIQ P6 makes it easy for you to scan patients from the NICU to geriatrics. And with raw data capability, you can do your postprocessing analysis later, minimizing your interaction time with fragile patients.

Finally, there's an ultrasound system that empowers you with certainty wherever you need to go and no matter who you need to scan.





Varicose vein displayed using Easy 3D; additional clinical information about the C-plane and the course of the vessel can be collected while acquiring a 3D image



3D volume acquisition of the uterus using the 4DE7C probe during a Saline Infusion Sonography (SIS) procedure

Capture images with clarity.

It's simple. A clear image leads to the most confident decision. That's why LOGIQ P6 is designed using innovative leadership technologies from GE Healthcare. Starting with an enhanced beamformer for deeper penetration, higher resolution and better color flow sensitivity, you'll find these advancements in imaging and more:

Speckle Reduction Imaging (SRI). Heighten your visibility of organs and lesions with high-definition contrast resolution that suppresses speckle artifact while maintaining true tissue architecture.

CrossXBeam™. Enhance tissue and border differentiation with a real-time spatial compounding acquisition and processing.

Real-time 4D Imaging. Acquire and construct volumetric images, displaying multiplaner views of the anatomy. See anatomical relationships not visualized otherwise.

DualBeam. Maintain high frame rates while using high line density, even in abnormal settings. Increase temporal resolution in fast-flow cardiac and vascular studies.

Harmonics. Increase resolution and cystic clarity with a combination of coded harmonics and Phase Inversion Harmonics.



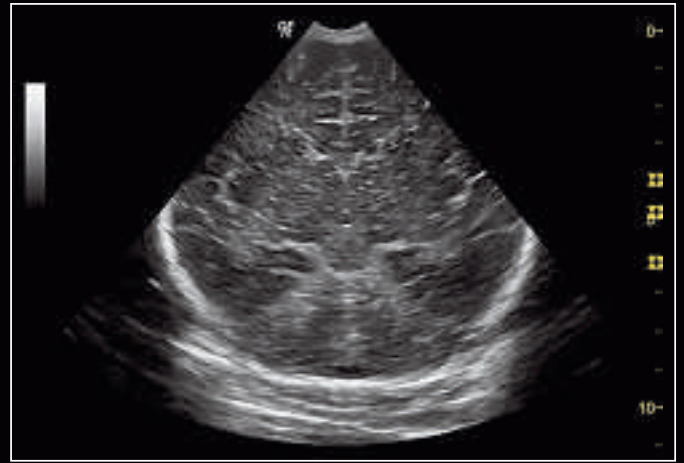
Sagittal prostate showing cystic structure imaging with the E8CS probes using fundamental imaging and SRI



Apical four-chamber view of adult heart with color Doppler using the 3S probe

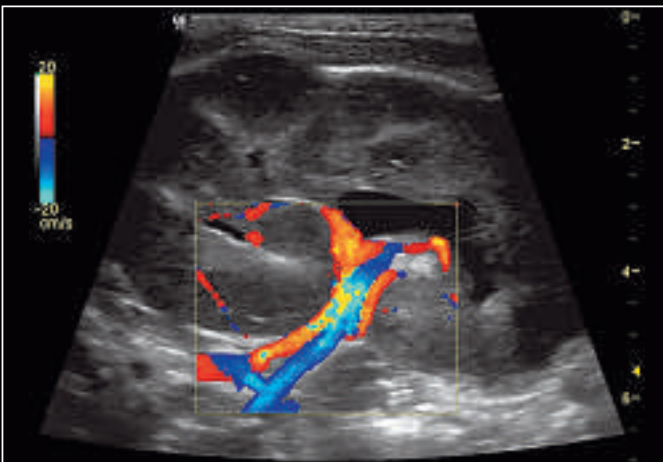


Ascites, liver and gallbladder stones are displayed together using the 5CS probe and a combination of Phase Inversion Harmonics and SRI

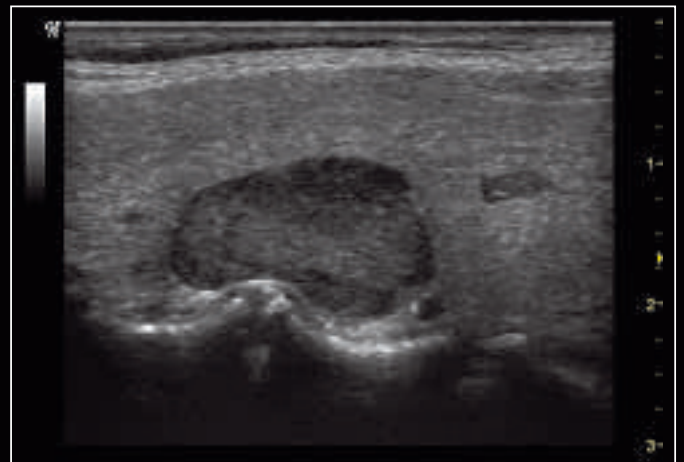


Neonatal head exam imaging with the 8C probe using CrossXBeam, SRI and harmonics

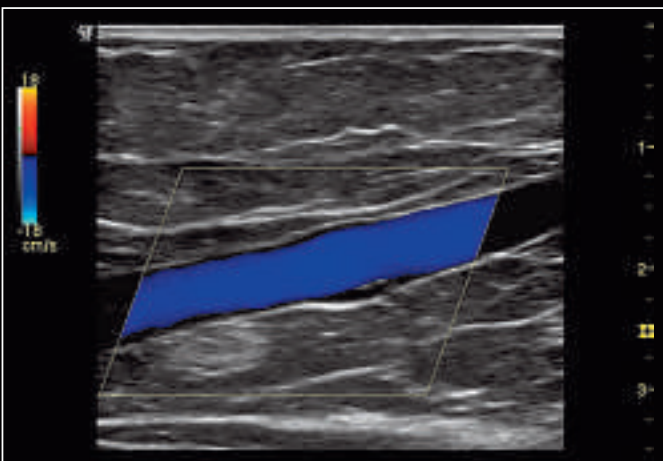
Diagnose with confidence.



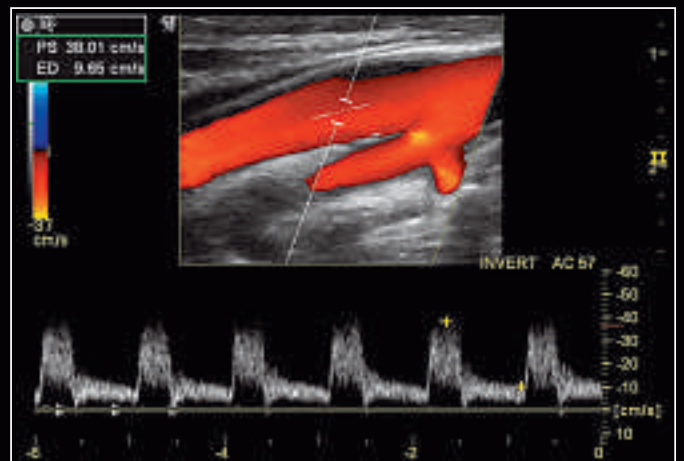
Renal artery and vein displayed using the 11L probe and a combination of virtual convex, fundamental imaging and SRI



High-frequency scan of a parathyroid and irregular thyroid tissue; Phase Inversion Harmonics and SRI used to show maximum homogeneity and detail resolution



11L sagittal vein with color Doppler using the 11L probe with Phase Inversion Harmonics, CrossXBeam and SRI features



Internal carotid artery with color and pulse wave Doppler using the 11L probe with Coded Harmonics, CrossXBeam and SRI

Maximize efficiency with portability.

LOGIQ P6 was designed with you in mind as you travel from room to room and floor to floor, scanning bedside and sometimes in challenging spaces. At any given moment, you need to be prepared for any patient. Simply put, you need portability for productivity. And the new LOGIQ P6 delivers both.

With its surprisingly light weight and small footprint, LOGIQ P6 moves with ease. And the substantial monitor is on an articulating arm making it effortless for you to glide the screen into the position that's best for you, which makes a big difference in minimizing eye strain after a long day of viewing.



Even when it's the little things that matter most, LOGIQ P6 delivers. A convenient drawer takes the hassle out of transporting items, and a footrest helps ease the stress of a full scanning schedule.

It's big on service and support, too.

LOGIQ P6 may come in a small package, but nothing was overlooked. We know you need more than just confidence in the equipment you use. You need confidence that you have the service and support you need, when you need it. That's why you'll receive:

- In-depth, on-site applications training
- Assistance by one of the best-trained and most widely deployed ultrasound service teams in the industry
- A certification program that gives field engineers the professional development and productivity skills they need to better service your systems
- Proactive monitoring, real-time support and training — all available through InSite™ ExC



©2008 General Electric Company – All rights reserved.

GE Medical Systems Ultrasound & Primary Care Diagnostics, LLC, a General Electric company, doing business as GE Healthcare.

General Electric Company reserves the right to make changes in specifications and features shown herein, or discontinue the product described at any time without notice or obligation. Contact your GE Representative for the most current information.

GE, GE Monogram, CrossXBeam, InSite and LOGIQ are trademarks of General Electric Company.

Healthcare Re-imagined

GE is dedicated to helping you transform healthcare delivery by driving critical breakthroughs in biology and technology. Our expertise in medical imaging and information technologies, medical diagnostics, patient monitoring systems, drug discovery, and biopharmaceutical manufacturing technologies is enabling healthcare professionals around the world to discover new ways to predict, diagnose and treat disease earlier. We call this model of care “Early Health.” The goal: to help clinicians detect disease earlier, access more information and intervene earlier with more targeted treatments, so they can help their patients live their lives to the fullest. Re-think, Re-discover, Re-invent, Re-imagine.

UNITED KINGDOM

GE Medical Systems Ultrasound
2, Napier Road
Bedford MK41 0JW
T 44 1234 340881
F 44 1234 266261

www.gehealthcare.com

EUROPE

GE Ultraschall
Deutschland GmbH
Beethovenstr. 239
42655 Solingen
Germany
T 49 212-28 02-0
F 49 212-28 02 28

AMERICAS

GE Healthcare
9900 Innovation Drive
Wauwatosa, WI 53226
U.S.A.
T 1 888 202 5582

ASIA

GE Healthcare Clinical
Systems ASIA
1105-1108 Maxdo Center
8 XingYi Road, Shanghai
200336
T 86 21 5257 4640
F 86 21 5208 0582



GE imagination at work