

GE Healthcare

Form, meet function.

LOGIQ P5 ultrasound system



The right size for imaging... anywhere, anytime

GE Healthcare's LOGIQ® P5 mobile ultrasound system opens the door for point-of-care ultrasound imaging across all care areas. Hospital radiology departments. Shared practices. Specialized clinics.

A powerful system is at your fingertips. Lightweight and easily maneuvered, the system can be effortlessly moved from patient to patient... or care area to care area.

When seconds count, you need ultrasound imaging that's fast and reliable. For diagnosis, you need quality images that allow you to assess and interpret with confidence. As the demands for better patient care increase, the mobile LOGIQ P5 console gives you imaging solutions to meet these challenges. At a surprisingly affordable investment.

Sleek profile... extraordinary functionality

Added features equip the LOGIQ P5 to meet a broad range of clinical applications.

- Four new broadband probes
- Workflow optimized making image management easy
- Enhanced 4D capabilities
- Productivity amplified with Doppler Pulse Wave Update
- Customizable reports refine patient data



Advanced capabilities in a mobile package

In the spirit of GE's technology migration strategy, many of the proven advanced applications from GE's high-end ultrasound systems are included in the LOGIQ P5.

- Speckle Reduction Imaging (SRI) eliminates noise while maintaining true tissue architecture.
- CrossXBeam™ imaging enhances tissue and border definition
- 3D/4D imaging clearly reveals real-time, multi-dimensional details
- Auto Optimization (AO) improves contrast resolution
- Auto TGC provides image uniformity with the touch of a button
- Phase Inversion Harmonics provides increased spatial resolution and deeper penetration

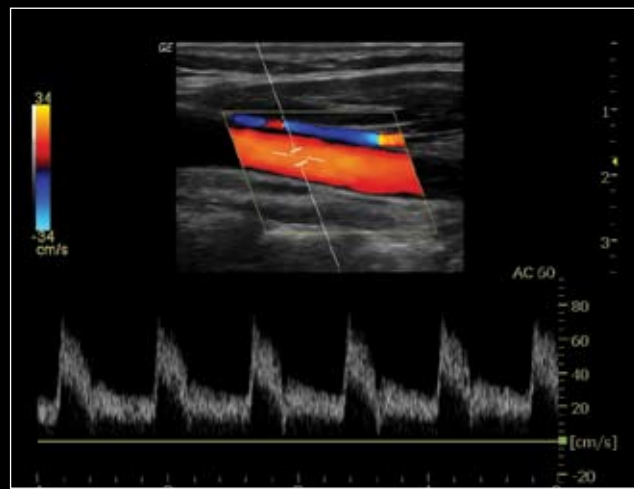
Improved function through new technology



The LOGIQ P5 supports an array of four new probes.

- **5CS** – Convex array balances need for penetration and resolution for enhanced tissue differentiation
- **11L** – Linear array promotes comfort through lightweight ergonomics
- **4DE7C** – Endocavitary probe provides 3D/4D capability for detailed anatomical surveys and renderings
- **E8CS** – Endocavitary probe promotes patient comfort and provides a wider field of view

Exceptional function meets extraordinary form



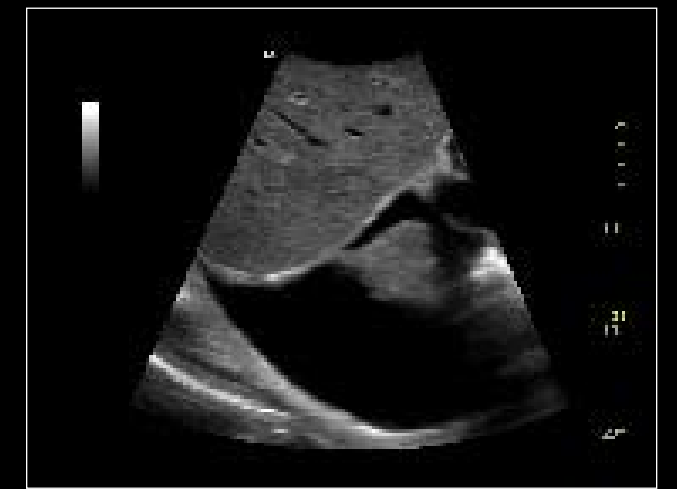
Carotid artery with B-mode color and pulse wave Doppler imaged using 9L probe.



Transverse mid-line of prostate imaged using E8CS probe.



Fetal profile imaged with Harmonics and CrossXBeam.



Abdominal image using 4C probe showing ascites.



Kidney with color flow imaging, acquired using the 4C probe.



Fetal kidney demonstrating hydronephrosis imaged using 4C probe.



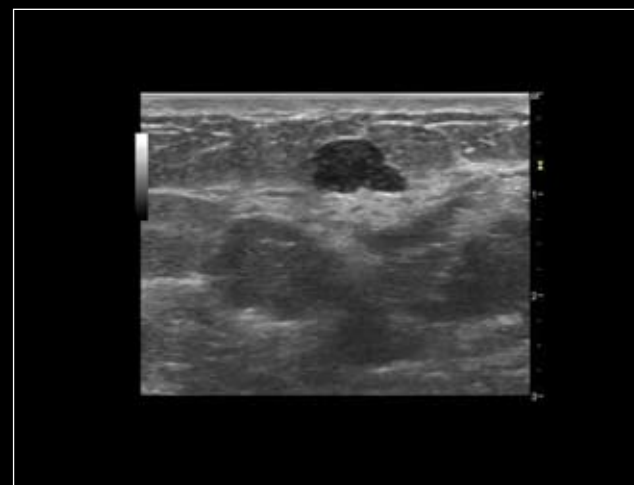
Gallbladder imaged using the 4C probe showing thickened gallbladder wall with edema.



Details of the uterus and endometrial lining imaged with CrossXBeam using 4C probe.



Visualization of the entire aorta using the 3.5C probe.



Complex breast lesion imaged with CrossXBeam.



Cardiac image using 3S probe and Harmonics showing aortic insufficiency.



Mitral valve prolapse imaged using 3S probe shown in four chamber apical view.

Flexible, advanced.

Striking a balance

The LOGIQ P5 is the most agile, easy to use system in its class. The ergonomic design permits use anywhere – even in small exam areas. Images appear on a 15" LCD flat monitor mounted on an articulating arm. Move the screen to any position for unobstructed viewing by the sonographer, the physician, or the patient. Tuck it out of the way during transport.

A fully functional keyboard is integrated on board. You'll appreciate the convenience and ease-of-use of hot keys and user-defined keys.

Whether you need a versatile, high-performance system for a specialized practice, or a secondary system for a large hospital, the LOGIQ P5 delivers the image quality and high performance of a system twice its size.



Streamlined data management

Flexible, advanced productivity and connectivity features help maximize equipment usage. The LOGIQ P5 leverages Raw Data capability. Fast transition times enhance efficiency to let you spend more time with your patients.

Patient data from the LOGIQ P5 can be seamlessly exported to a memory stick or sent via DICOM to the hospital network. A configurable reporting package allows hard copy images or reports to be printed on any networked printer. Storage flexibility allows data and images to be saved in PC viewable format.



Shaping the future

GE Healthcare's on-site applications training can maximize the functionality of ultrasound imaging for your care area. Certified specialists and customized service contracts give you the on-going support that you need, with the customer-driven focus that you expect.



© 2007 General Electric Company – All rights reserved.
GE and GE Monogram are trademarks of
General Electric Company.

LOGIQ is a registered trademark of GE Healthcare.

General Electric Company, doing business as
GE Healthcare.

Healthcare Re-imagined

GE is dedicated to helping you transform healthcare delivery by driving critical breakthroughs in biology and technology. Our expertise in medical imaging and information technologies, medical diagnostics, patient monitoring systems, drug discovery, and biopharmaceutical manufacturing technologies is enabling healthcare professionals around the world to discover new ways to predict, diagnose and treat disease earlier. We call this model of care “Early Health.” The goal: to help clinicians detect disease earlier, access more information and intervene earlier with more targeted treatments, so they can help their patients live their lives to the fullest. Re-think, Re-discover, Re-invent, Re-imagine.

GE Healthcare
9900 Innovation Drive
Wauwatosa, WI 53226
U.S.A.
www.gehealthcare.com



imagination at work